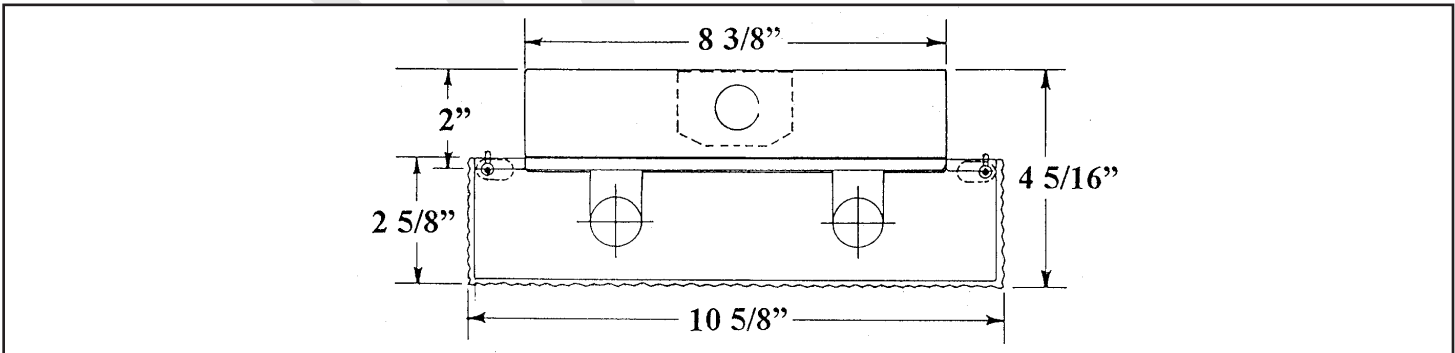
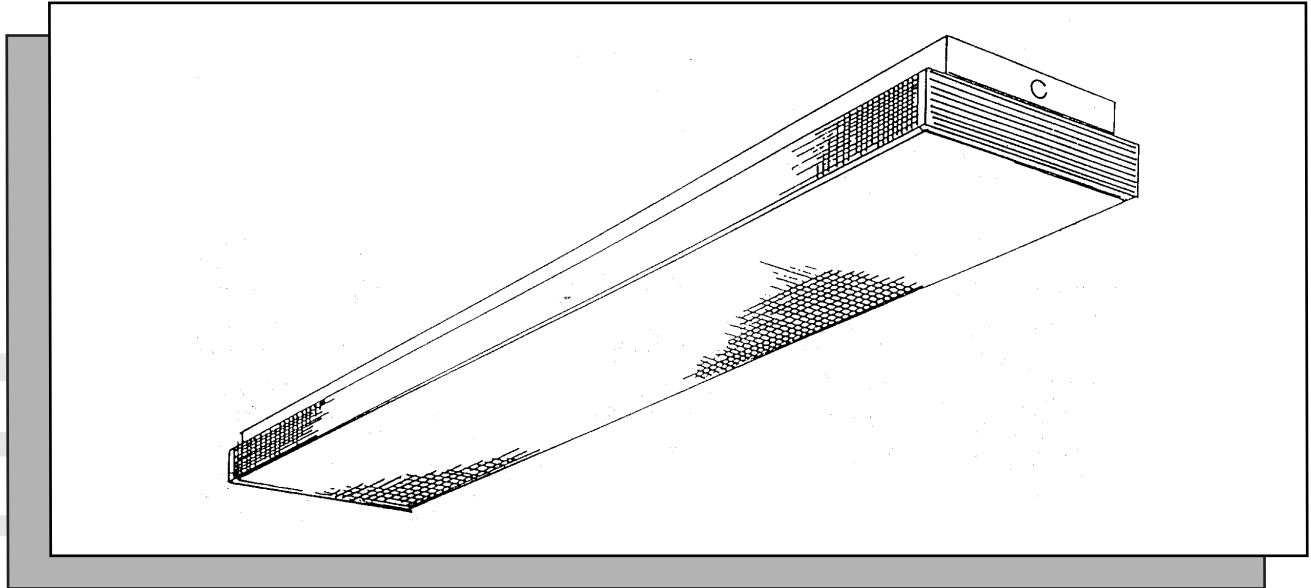
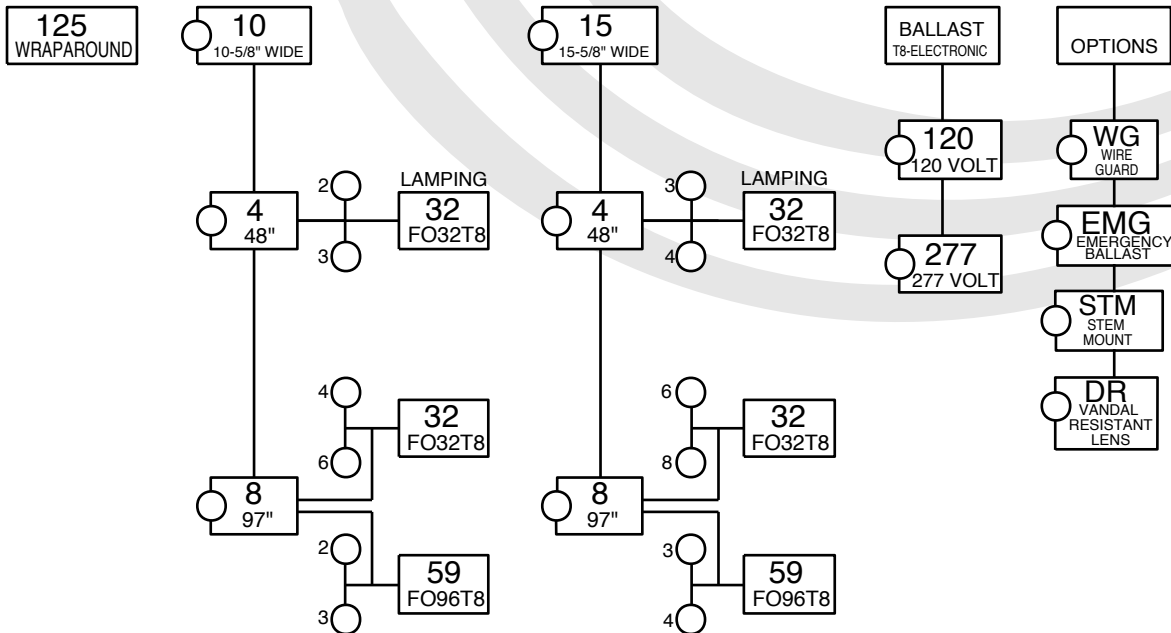


125 SERIES

Visual Comfort, Surface Prismatic
 Extruded Acrylic Lens Surface / Pendant Mounting



ORDERING DATA



Specifications

DESCRIPTION: Surface Wraparound: High efficiency, high visual comfort, and attractive appearance make it ideal for educational, commercial, and institutional applications. Partial upright illuminates ceiling and minimizes the cave effect. Excellent fixture for drywall ceiling or suspended ceiling with shallow plenum space.

HOUSING: Precision die formed 20 gauge cold rolled steel. Welded construction for rigidity. The socket plates and ballast cover are easily accessible for servicing.

SHIELDING: K12 acrylic prismatic lens. Linear prisms on side walls. Spring loaded latches allow lens to hinge from either side. Consult factory for options not listed.

BALLAST: Electronic T8, Class "P", CBM-ETL certified. Consult factory for magnetic T12 ballast

FINISH: All steel parts are treated with the HASCO "Perm-O-Last" multi-stage rust inhibitive process. Standard finish is a durable baked white enamel with a minimum reflectance of 90%. Consult factory for other colors and finishes. Fixture is post painted.

LABELING: All HASCO fixtures are U.L. approved and IBEW union made.

PHOTOMETRICS: 125 SERIES

COEFFICIENTS OF UTILIZATION, ZONAL CAVITY METHOD
EFFECTIVE FLOOR CAVITY REFLECTANCE 0.20

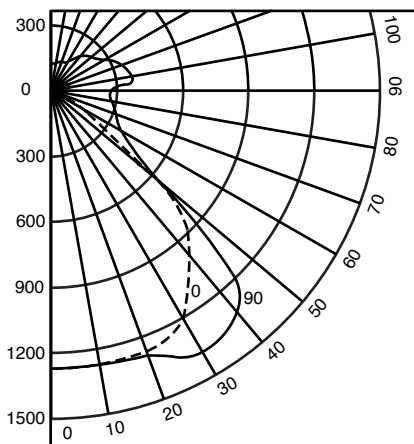
CEILING WALL RCR	80				50				30			
	70	50	30	10	50	30	10	50	30	10		
0	71	71	71	71	63	63	58	58	58	58		
1	65	62	59	57	55	54	52	52	50	49		
2	60	55	51	48	50	47	44	46	44	41		
3	55	49	45	42	45	42	39	42	39	37		
4	51	45	40	36	41	37	34	38	35	33		
5	47	40	35	32	37	33	30	35	31	29		
6	44	36	32	28	33	30	27	32	28	28		
7	41	33	28	25	31	27	24	29	25	23		
8	38	30	25	22	28	24	21	26	23	20		
9	35	27	23	19	25	21	18	24	20	18		
10	32	25	20	17	23	19	17	22	18	18		

Luminaire: Formed Steel
Ballast: Valmont E232P1120601
Lamping: [2] F032T8 @2900 lumens
Mounting: Surface

HASCO File #0321-3/86
Prepared by: P. Marshall
Catalog number: 125-10-4-232-120v

Data subject to change
Please consult factory for
additional information.

ISOCURVE



CANDLE POWER SUMMARY

VERT ANGLE	0	45	90
0	1325	1325	1325
10	1318	1330	1328
20	1275	1332	1360
30	1198	1310	1395
40	1055	1257	1360
45	879	1090	1179
50	532	595	725
60	232	355	390
70	125	240	328
80	45	159	275
90	6	115	271
100	50	201	395
110	45	164	338
120	39	141	285
130	36	125	256
135	28	118	241
140	27	97	208
150	26	76	157
160	25	69	152
170	25	65	146
180	23	59	139

ZONAL LUMEN SUMMARY

ZONE	LUMENS	%LAMP	%FIXTURE
0-30	1118	18.4	22.4
0-40	1882	33.0	38.0
0-60	3270	57.9	65.8
0-90	4074	71.8	79.9