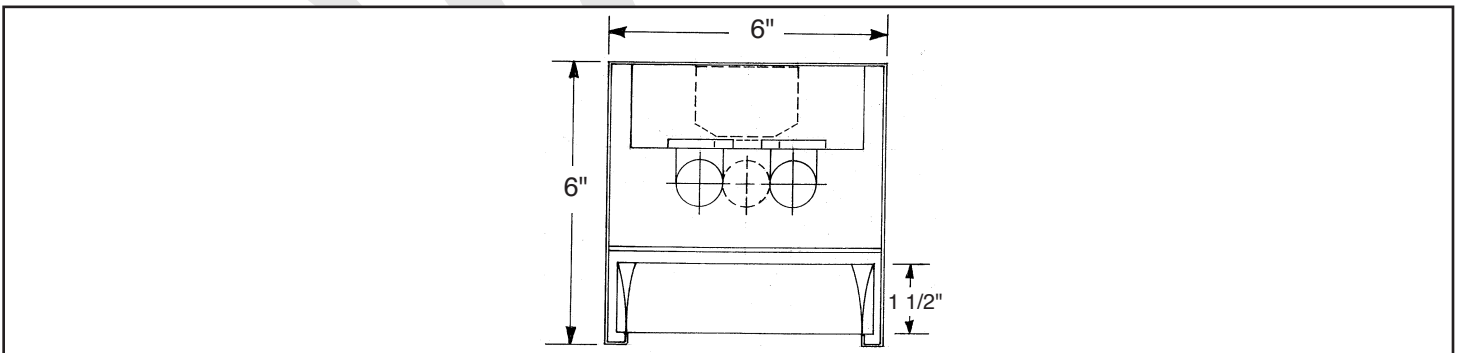
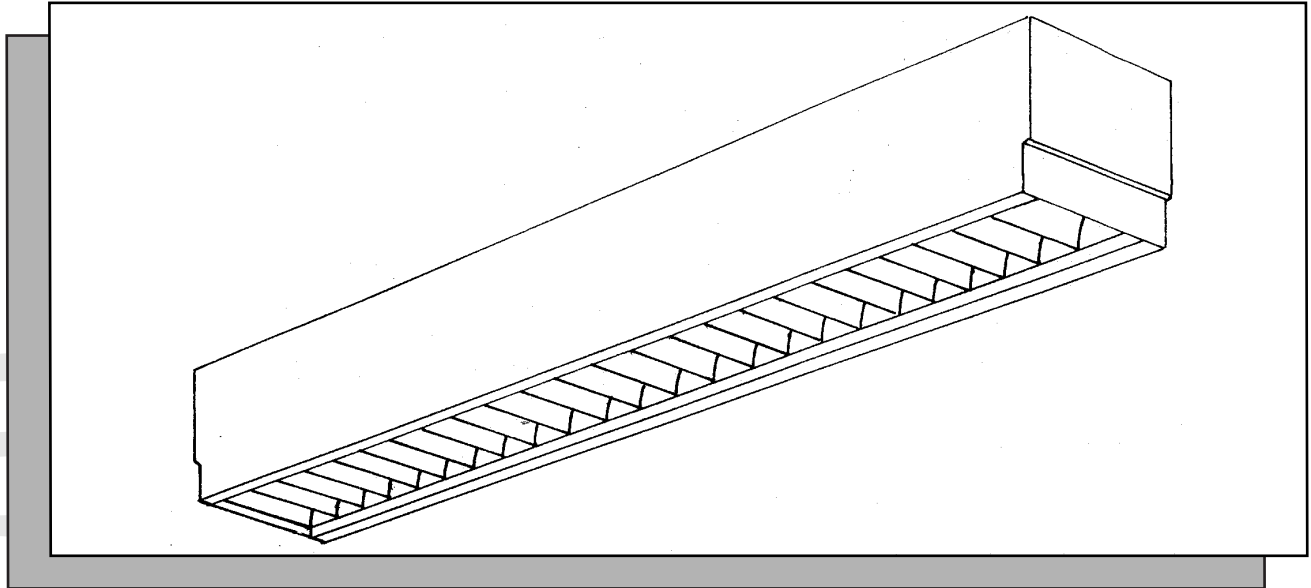
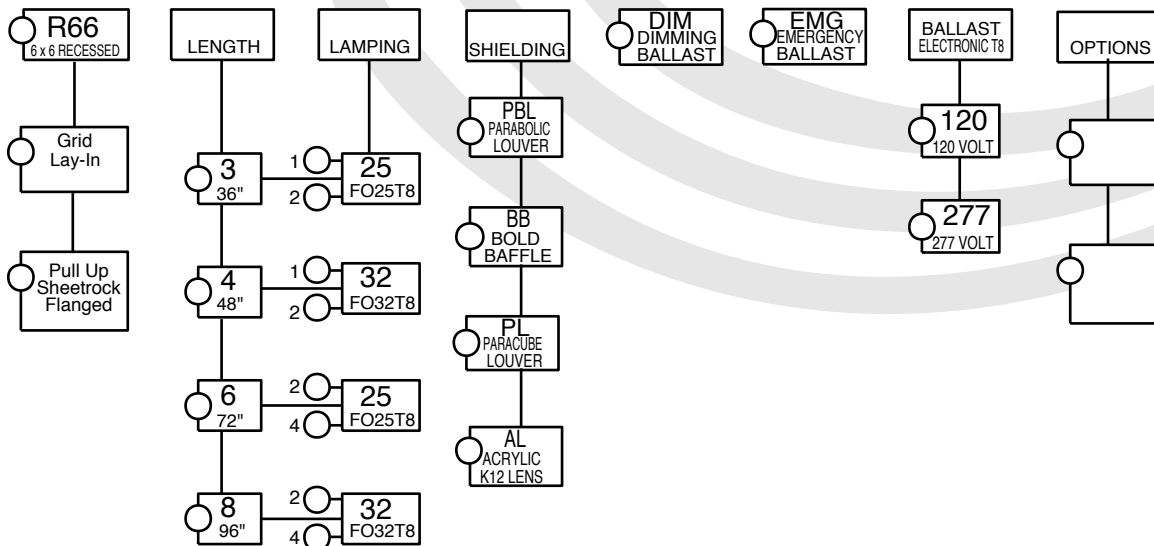


R 66 P RECESSED PARABOLIC SERIES

CONCEALED GRID / EXPOSED GRID CEILING



ORDERING DATA



CONSULT FACTORY
FOR T5 TWIN TUBE LAMPS

Specifications

DESCRIPTION: High efficiency, high visual comfort, and attractive appearance make it ideal for architectural spaces. Recessed mounting and narrow cross section add definition to space and ceiling. Choice of shielding makes this a versatile lighting instrument. Fixture commonly used in educational, institutional, transportation terminal, and high traffic commercial spaces.

HOUSING: Precision die formed 20 gauge cold rolled steel. Welded construction for rigidity. The socket plates and ballast cover are easily accessible for servicing.

SHIELDING: Semi specular aluminum anodized reflector system. Choices of low glare, low iridescence, high efficiency semi specular parabolic louver, champagne gold, paracube louver, bold louver, or prismatic lens. Consult factory for options not listed.

BALLAST: Electronic T8 or Twin Tube 40w, Class "P", CBM-ETL certified. Consult factory for magnetic T12 ballast

FINISH: All steel parts are treated with the HASCO "Perm-O-Last" multi-stage rust inhibitive process. Standard finish is a durable baked white enamel with a minimum reflectance of 90%. Consult factory for other colors and finishes. Fixture is post painted.

LABELING: All HASCO fixtures are U.L. approved and IBEW union made.

PHOTOMETRICS: R 66 P

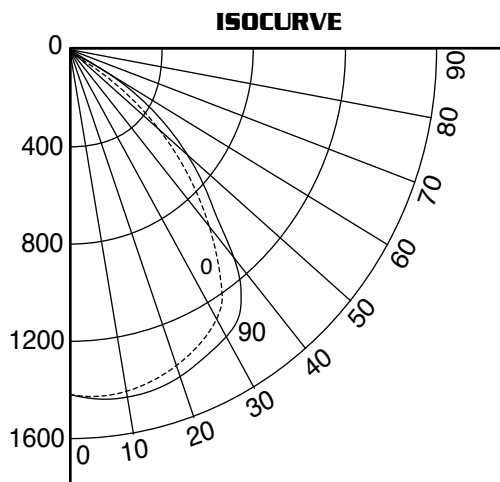
COEFFICIENTS OF UTILIZATION, ZONAL CAVITY METHOD
EFFECTIVE FLOOR CAVITY REFLECTANCE 0.20

MULTIPLIERS	CEILING	80			50			30				
	WALL	70	50	30	10	50	30	10	50	30	10	
L acrylic louver 1 lamp x1.10	RCR	0										
		1	62	57	55	53	48	48	45	44	43	43
		2	54	51	47	44	44	42	40	40	39	37
PBC paracube louver 1 lamp x .66 2 lamp x .55		3	52	45	42	41	40	37	35	37	35	33
		4	46	41	37	34	37	33	31	33	31	29
		5	43	37	33	29	34	29	27	30	28	25
		6	40	33	29	26	30	26	24	28	25	23
B bold louver 1 lamp .81 2 lamp .71		7	36	30	25	22	27	24	21	25	22	20
		8	33	26	23	20	26	21	19	23	20	18
		9	32	25	22	19	22	21	16	20	18	16
		10	30	23	19	17	20	17	15	19	16	14

Luminaire: Formed Steel
Ballast: Valmont E232P1120601
Lamping: [2] F32T8 @2900 lumens
Mounting: Recessed

HASCO File #101875/ITL
Prepared by: P. Marshall
Catalog number: R 66P-4-232-PBL-120

Data subject to change
Please consult factory for
additional information.



CANDLE POWER SUMMARY

VERT ANGLE	0	90
0	1410	1410
10	1412	1496
20	1385	1425
30	1256	1374
40	950	1102
45	755	884
50	672	635
60	216	273
70	56	132
80	26	62
90	0	0

ZONAL LUMEN SUMMARY

ZONE	LUMENS	%LAMP	%FIXTURE
180-90	280	4.88	11.45
90-0	2436	41.5	90.20