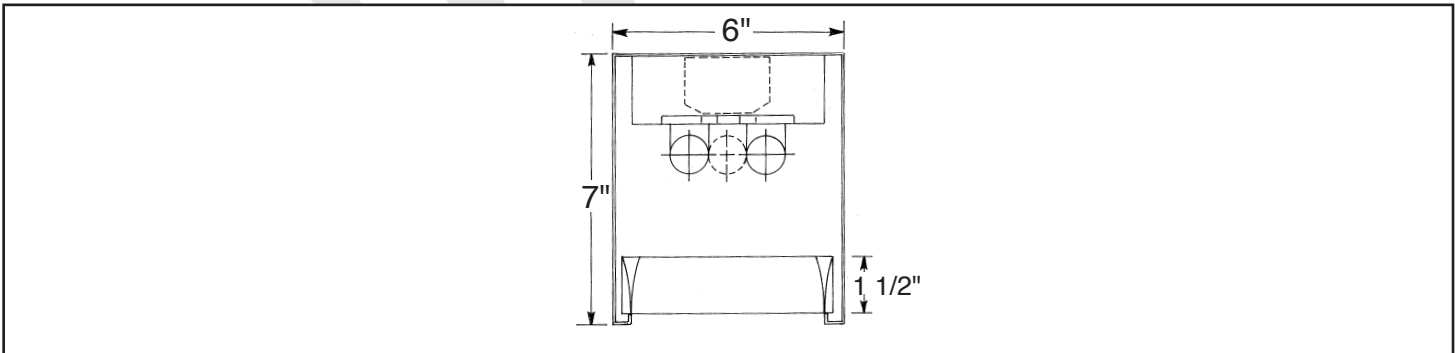
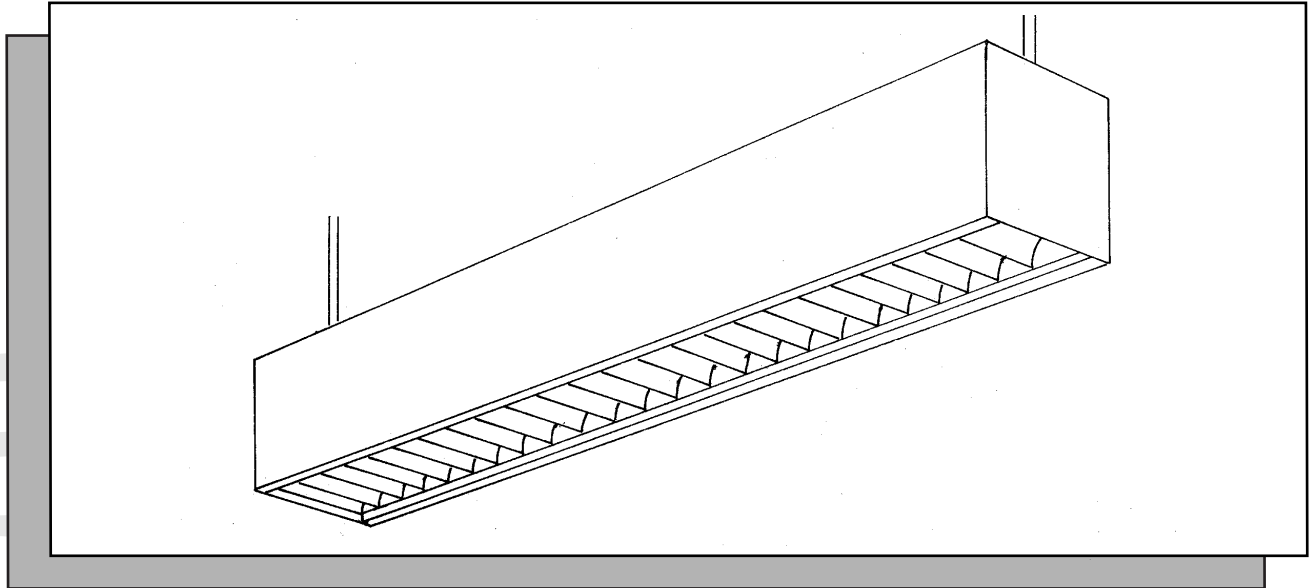
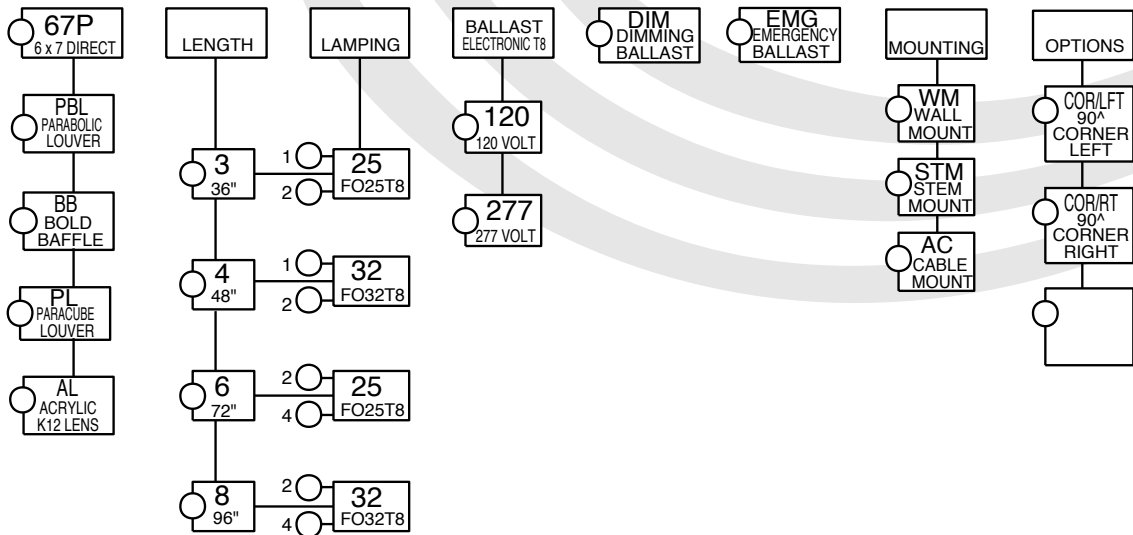


67 PROFILE SERIES SURFACE DIRECT PARABOLIC



ORDERING DATA



Specifications

DESCRIPTION: High efficiency, high visual comfort, and attractive appearance make it ideal for architectural spaces. Rectilinear shape and choice of shielding make this a versatile lighting instrument. Common uses are for chalkboard illumination, telephone kiosks, study carrels, corridors, and retail spaces.

HOUSING: Precision die formed 20 gauge cold rolled steel. Welded construction for rigidity. The socket plates and ballast cover are easily accessible for servicing. Surface and pendant mounting available.

SHIELDING: Direct distribution has choices of low glare, low iridescence, high efficiency semi specular parabolic louver, champagne gold, paracube louver, bold louver, or prismatic lens. Consult factory for options not listed.

BALLAST: Electronic T8 or Twin Tube 40w, Class "P", CBM-ETL certified. Consult factory for magnetic T12 ballast

FINISH: All steel parts are treated with the HASCO "Perm-O-Last" multi-stage rust inhibitive process. Standard finish is a durable baked white enamel with a minimum reflectance of 90%. Consult factory for other colors and finishes. Fixture is post painted.

LABELING: All HASCO fixtures are U.L. approved and IBEW union made.

PHOTOMETRICS: 67 Profile Series

COEFFICIENTS OF UTILIZATION, ZONAL CAVITY METHOD

EFFECTIVE FLOOR CAVITY REFLECTANCE 0.20

MULTIPLIERS
L acrylic louver
1 lamp x1.10

PBC paracube louver
1 lamp x .66
2 lamp x .55

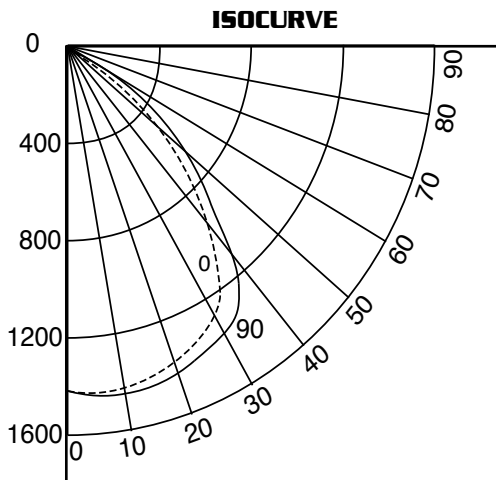
B bold louver
1 lamp .81
2 lamp .71

CEILING	80				50				30				
WALL	70	50	30	10	50	30	10	50	30	10	50	30	10
RCR													
	62	57	55	53	48	48	45	44	43	43			
	54	51	47	44	44	42	40	40	39	37			
	52	45	42	41	40	37	35	37	35	33			
	46	41	37	34	37	33	31	33	31	29			
	43	37	33	29	34	29	27	30	28	25			
	40	33	29	26	30	26	24	28	25	23			
	36	30	25	22	27	24	21	25	22	20			
	33	26	23	20	26	21	19	23	20	18			
	32	25	22	19	22	21	16	20	18	16			
	30	23	19	17	20	17	15	19	16	14			

Luminaire: Formed Steel
Ballast: Valmont E232P1120G01
Lamping: [2] F32T8 @2900 lumens
Mounting: Pendant

HASCO File # 131865/ITL
Prepared by: P. Marshall
Catalog number: 67 PBL-4-232-120

Data subject to change
Please consult factory for
additional information.



CANDLE POWER SUMMARY

VERT ANGLE	0	90
0	1410	1410
10	1412	1496
20	1385	1425
30	1256	1374
40	950	1102
45	755	884
50	672	635
60	216	273
70	56	132
80	26	62
90	0	0

ZONAL LUMEN SUMMARY

ZONE	LUMENS	%LAMP	%FIXTURE
180-90	280	4.88	11.45
90-0	2436	41.5	90.20